



# ASHBURY MEADOW PRIMARY SCHOOL NEWSLETTER

**Article 17 You have the right to collect information  
from the media – radios, newspapers, television, etc – from all around  
the world to see.**

## Attendance

NR – 93.2%	4R – 96.7%
NV – 98.3%	4M – 96.7%
RM – 96.1%	5M – 96.1%
RW – 93.5%	5C – 95.9%
1S – 99.3%	6G – 96.1%
1W – 97.4%	6R – 96.3%
2F – 97.3%	Bumblebees – 97.1%
2S – 94.7%	Squirrels – 84.0%
3W – 93.1%	Hedgehogs – 93.3%
3B – 97.9%	Dragonflies – 90.0%
Class Attendance Winner – 1S	
Weekly Attendance Whole School – 95.6%	

## Star of the Week Award

Zayaan	Ameer
Eva	Musab
Jayce	Hur Abbas
Mikaeel	Fatima
Madison	Jacob
Maizie	Angel
Ahmed	Ruby
Victor	
Jessica	
Yusuf	
Saad	
Zosia	

## Question of the Week Award

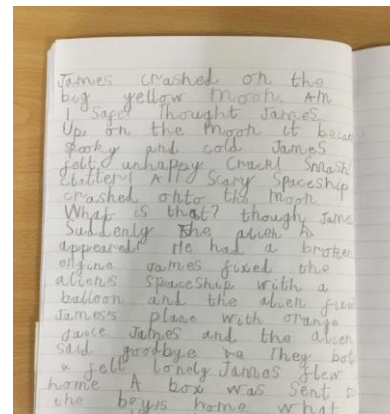
Essa	Mubarak
Minka	Razan
Amer	
Roha	
Nathan	
Ayah	
Scarlett	
Nehanda	
Harvey	
Deuel	

## Reader of the Week Award

Ayman	Orezime
Kayson	Evia
Lamiya	Mitaire
Reem	Olivia
Yaroslav	Zara
Tongtong	
Acacia	
Mazin	

## NOTICES

### Highlight of the week: Year 1



Year 1 have worked really hard on their independent writing, based on *The Way Back Home* by Oliver Jeffers

Y6 trip to the Crime and Punishment Museum, check out the link below for pictures!

<https://www.ashburymeadow.co.uk/work/y6-visit-to-crime-and-punishment-museum/95000>

## Outside of school sporting star

## Lunchtime Sports Legends

Year 1- Ayman	Year 4- Adam
Year 2- Muhammad	Year 5- Jack
Year 3- Saad	Year 6- Jenson

## Holiday Dates

February half term- Friday 14<sup>th</sup> February 2025

School reopens- Monday 24<sup>th</sup> February 2025

## Notices

### Information for parents

Kathryn G & Amie B – HSLO

If you want to book an urgent telephone appointment with Kathryn G or Amie B please ring school 0161 989 2999 and we will book you in a telephone appointment.

**Reminder** – School start time **8.45am** the morning gates open at **8.35am** to enable you to get onto the playground and get children into their classes at **8.40am**, ready for the start of lessons at **8.45am**.

Gates will close at **8.50am**, any child arriving after this will be given a late mark. It is vital pupils arrive and are ready to start lessons promptly at the start of the day.

- If you think you might be entitled to Free School Meals – please check online at [www.cloudforedu.org.uk/ofsm/sims](http://www.cloudforedu.org.uk/ofsm/sims)
- Please see the website for applying for 30 hours free childcare (Nursery only) <https://www.gov.uk/30-hours-free-childcare>

### • School Uniform

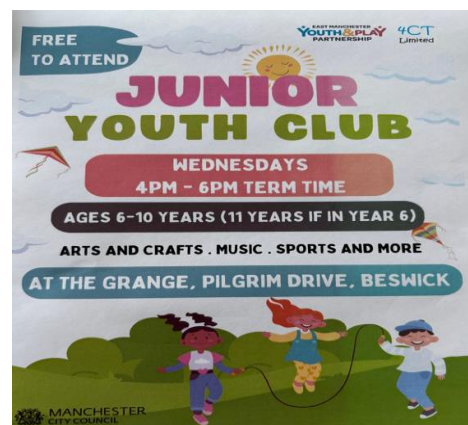
Logo school uniform can be purchased from [www.gooddies.co.uk](http://www.gooddies.co.uk) or alternatively you can buy plain uniform from Asda or any other supermarket. The school uniform is a navy sweatshirt or cardigan, white polo shirt and grey/black trousers.

## SEND school wear

ASDA now has an [Easy on Easy Wear school uniform range](#) designed to support independent dressing and sensory needs. It includes easy fastenings, pull-on styles and no labels.

## NOTICES CONTINUED

- **Nuts in School**  
Important Information – Please remember nuts are not to be brought into school or seeded bread – no nuts or seeded bread in lunch boxes or snacks. We have a number of children in school who have severe nut allergies.
- **Reading at Home**  
Children can support reading at home using their home reading book and online through the Myon Elibrary. This can be accessed at <https://www.myon.co.uk/login/index.html>.
- **Car Parking** – A number of parents are parking blocking residents drives and putting their cars on kerbs and pavements. This is causing safety issues for children walking to school.
- **Milk**  
You must register with [www.coolmilk.com](http://www.coolmilk.com) This is free for under 5's, over 5's £18 per term.
- **E-Safety Message**  
To keep up to date on E-Safety issues, please visit <https://www.nspcc.org.uk/preventing-abuse/keeping-children-safe/online-safety/> or [saferinternet.org.uk](http://saferinternet.org.uk) to get regular updates about new apps and games to make sure your children stay safe online at home.



## Assembly Times for Autumn Term

Date	Time	Phase	Location
Jan 10 <sup>th</sup>		Whole school assembly on zoom pupils only	
Jan 17 <sup>th</sup>	9.00am	UKS2 5&6	Hall
Jan 24 <sup>th</sup>	9.00am	KS1&2	Hall
Jan 30 <sup>th</sup>	9.00am	EYFS	studio
Jan 31 <sup>st</sup>	9.00am	LKS2 3&4	hall
Feb 7 <sup>th</sup>	9.00am	UKS2 5&6	Hall
Feb 14 <sup>th</sup>	9.00am	KS1 1&2	Hall